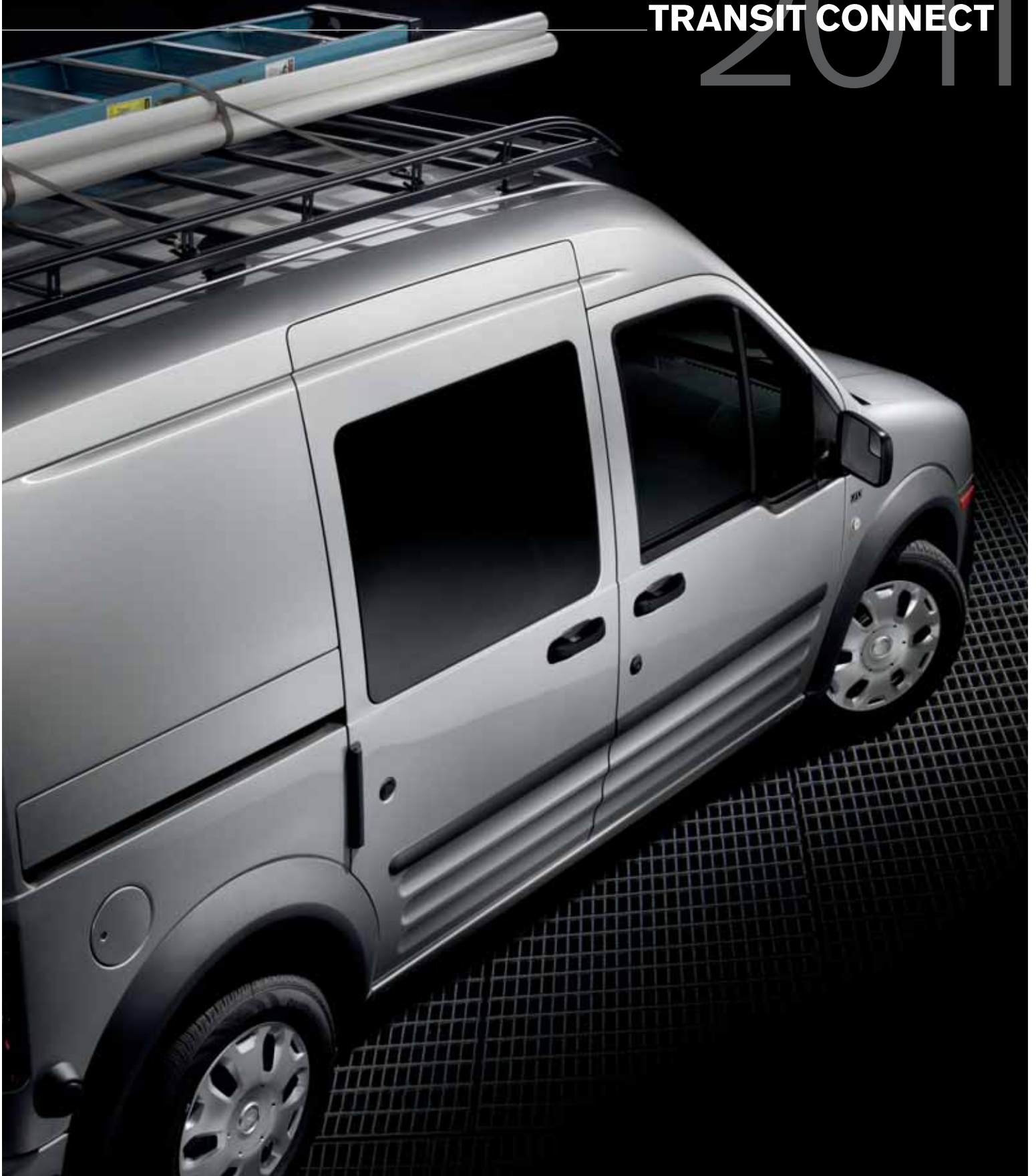


2011 TRANSIT CONNECT



commtruck.ford.com



Thank you for your interest in the **2011 Transit Connect** Included in this brochure you'll find information about:

ENGINEERING: You need a commercial van for your business, but not a big van with its size and high operating costs. You need a Ford Transit Connect.

EXTERIOR: Don't let its compact dimensions deceive you. Transit Connect is a truck and built to earn its keep on your job.

INTERIOR: If you were always looking forward, you would think you're at the wheel of a car with a firm and comfortable bucket seat, floor shifter and sporty instrumentation.

TECHNOLOGY: Available Ford Work Solutions technology easily keeps track of your tools, inventory and fleet operations. That's not working hard. That's working smart.

Dealer Information

Find up-to-date contact information for your local Ford dealer. To visit a local dealer Web site and view a map of their location, click on one of the links below.

Midway Ford Truck Center	7601 NE 38th Street Kansas City, MO 64161	(816) 455-3000
Shawnee Mission Ford Inc	11501 W. Shawnee Mission Pkwy. Shawnee, KS 66203	(913) 631-0000
Metro Ford, Inc.	2860 S. Noland Road Independence, MO 64055	(816) 254-9800
Thoroughbred Ford	I-29 at Barry Road Kansas City, MO 64154	(816) 505-1818

EXPERIENCED MY FORD YET? Get an inside look at the benefits of Ford ownership at the My Ford owner Web site. It's a one-stop spot for managing important vehicle information – 24/7, whenever you need it. It's free to register for personalized maintenance schedules, incentives and offers, and much more. You can even access your Ford Credit information and online bill payment services. Log on to www.myford.fordvehicles.com to get started.



best in class

23 combined
mpg

21 city/26 hwy¹



2010 North American
Truck of the Year



Transit Connect XLT Van in Silver with available equipment
Ford Custom Graphics by Original Wraps,TM Inc.²

exceeds your needs

Introducing the New 2011 Transit Connect

Minivans. SUVs. CUVs. The one-of-a-kind Ford Transit Connect is the **right one to replace them all**. Available as an **XL or XLT Van** and as an **XLT or new XLT Premium Wagon**, it combines the **room and versatility of a van** with the **efficiency of a large car**. It's right-sized and purpose-built to swallow cargo, sip gas¹ and park in tight spaces. And it does it all while conveying a professional image designed to help you **stand out in a crowd**.

¹Class is Small Cargo Vans. EPA-estimated. ²Ford Licensed Accessory. Visit fordcommercialgraphics.com to develop your selection. See dealer for additional details. Vehicles throughout this catalog may be shown with optional and aftermarket upfit equipment.

2011 TRANSIT CONNECT

commtruck.ford.com



Transit Connect XLT Van in Frozen White with available equipment



delivers protection and reliability

Transit Connect is engineered and tested to thrive in conditions that are harder, faster and tougher than most of its drivers will ever see. It's **Built Ford Tough®** on a rugged, **commercial vehicle platform**, with over 670,000 sold worldwide since 2003. **Regular maintenance is simple**, and the first spark plug change isn't due until 90,000 miles.¹ Commercial customers can take advantage of outstanding support from our **Business Preferred Network** – top Ford Dealers who offer special services to businesses like yours.

Transit Connect is certified to **Ford Light Commercial Vehicle Durability Standards** – tested to 150,000 customer-equivalent miles.

- Doors and accompanying hardware were tested over a cycle of door opening and slamming equal to 205 times a day for 2 years
- Parts vibration testing simulated the worst roads to help ensure solid, reliable performance and long parts life
- Prolonged exposure to extreme temperatures across 58 countries has proven its reliability in varying climates
- Wheels, tires, suspension knuckles, springs, shock absorbers and underbody structure were tested for taking on potholes and curbs

AdvanceTrac® with RSC® (Roll Stability Control™) is standard on Wagons and available on Vans. It is the only electronic stability control system in the class with a vehicle-roll motion sensor that measures the roll rate 100 times a second. Working with the Anti-Lock Brake System, traction control and yaw control, the system automatically determines how to apply individual brakes and modify engine power to help keep all 4 wheels firmly planted.²

¹Under normal driving conditions with routine fluid and filter changes.
²Remember that even advanced technology cannot overcome the laws of physics. It's always possible to lose control of a vehicle due to inappropriate driver input for the conditions.



2011 TRANSIT CONNECT

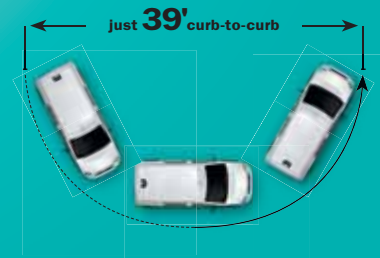
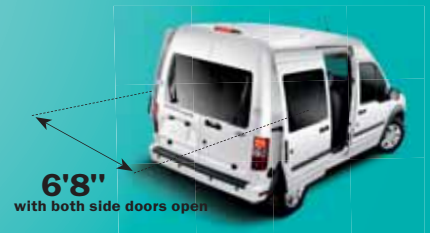
commtruck.ford.com



sized just right

holds over **129** cu. ft.
& up to **1,600** lbs.¹

Transit Connect Van provides 2 seats up front, a **huge cargo box** with all-around access, and near-vertical sidewalls so you can make the best use of all that space. **Sliding doors on both sides** of the van let you load and unload the front half of the cargo area, or help position long items being loaded from the rear. Out back, **50/50 split rear doors** swing 180° in standard trim, or available doors on articulated hinges (shown below) swing a full 255°. You've got 4 options for the van's door panels: side- and rear-door glass, single-side door glass, no glass or rear glass only. Inside, an expansive load floor plus **low side and rear liftover heights** help take the stress out of loading and unloading. Transit Connect is always ready for business.



eases your drive

When activated while you're slowly backing up or parallel parking, the optional **Reverse Sensing System (A)** automatically detects certain objects up to 6 ft. behind the vehicle. It beeps more rapidly as you get closer.

Integrated **blind spot mirrors (B)** are standard on all Vans and Wagons.

When the vehicle is in Reverse, the available **rear view camera (C)** displays a full-color image and handy sight lines on the rearview mirror.

Optional **Ford Work Solutions™²** offer full-function computing, telephone,³ Internet access,³ Garmin® navigation and more, right inside your vehicle. Learn more at fordworksolutions.com.



¹When properly equipped. Van GVWR is 5,005 lbs. Load rating represents maximum allowable weight of people, cargo and body equipment combined, and is reduced by the weight of the optional equipment. ²Ford Work Solutions include Ford Licensed Accessories. See dealer for limited warranty details. To avoid distractions, some functions are disabled while vehicle is in motion. Coming late 2010. ³Sprint subscription and 1-year agreement required.

2011 **TRANSIT CONNECT**

commtruck.ford.com





New Transit Connect XLT Premium Wagon with available equipment

fits you and a crew

Whether you're using it for work or play, **Transit Connect Wagon** is the perfect multitasking partner. There's plenty of **room for 5** with the standard **2nd-row 60/40 split-fold seat**. You can carry up to **78.4 cu. ft.** of cargo behind it, or up to **118.7 cu. ft.** when folded. With the **new XLT Premium**, you also get a **4-speaker audio system**, enhanced rear-cargo area trim including a **storage pocket** in the door, **rear-quarter flip-open windows** and more. It all adds up to one very accommodating ride.



New Transit Connect XLT Premium Wagon in Torch Red with available equipment

2011 TRANSIT CONNECT

commtruck.ford.com



STANDARD FEATURES

MECHANICAL

2.0L DOHC Duratec® I-4 engine
4-speed automatic transmission with overdrive
15.4-gallon fuel tank capacity
150-amp alternator
500 Cold Cranking Amps, 50-amp-hr maintenance-free battery
90,000-mile spark plug change interval ¹
Front-wheel drive (FWD)
Power front disc/rear drum brakes with Anti-Lock Brake System (ABS)
Rack-and-pinion steering
Single-note horn
Suspension – Front: independent MacPherson-strut with stabilizer bar; rear: multileaf spring with stabilizer bar

SEATING

Driver and front-passenger buckets in cloth

INTERIOR

12V single front powerpoint
Carpeted floor covering in front
Center console with 2 cupholders, 2 stowage bins, and 1 additional folding cupholder
Day/night rearview mirror (Van requires rear glass)
Dome lighting (front, middle and rear)
Driver sun visor with note strap; passenger sun visor with mirror
Front overhead storage shelf with net
Full-length molded cloth headliner
Instrument panel with speedometer, tachometer, fuel gauge, engine coolant temperature and digital clock
Manual air conditioning
Map pocket in driver and front-passenger doors
Smoker's Package includes ashcup and lighter
Tilt/telescoping steering column

EXTERIOR

15-in. steel wheels with 6-spoke wheel covers
P205/65R15 BSW tires
180°-opening rear doors
Bodyside moldings in Gray
Dual sliding side doors (solid panels on Van; glass windows on Wagon)
Full-size spare tire
Locking fuel-filler door
Rear fog lamps
Wheel-lip moldings in Gray
Windshield wipers – Front variable-speed; rear 2-speed (included on Vans when equipped with rear glass)

SAFETY & SECURITY

Driver and front-passenger front airbags ²
Front-seat side airbags ²
Collapsible steering column
Side-intrusion door beams
Tire Pressure Monitoring System (excludes spare)

¹Under normal driving conditions with routine fluid and filter changes. ²Always wear your safety belt, secure children in the rear seat and follow airbag warning label instructions. ³Cargo and load capacity limited by weight and weight distribution.

DIMENSIONS & CAPACITIES

Exterior

Front track	59.3"
Overall width with mirrors	83.2"
Rear door opening height	52.1"
Rear door opening width at floor	50.2"
Rear track	61.1"
Side door opening width	32.1"
Side door opening height	46.9"
Overall height (at curb weight)	79.3"
Ground clearance (at rear axle)	7.2"
Load floor height (at curb weight)	23.1"
Wheelbase	114.6"
Overall length	180.6"
Turning diameter (curb-to-curb)	39.0'

Cargo Area

Maximum cargo length at floor	81.0"
Floor width at wheelhouse	48.1"
Maximum cargo height	53.7"
Wagon cargo volume behind 1st row (cu. ft.) (2nd row seats folded)	118.7
Wagon cargo volume behind 2nd row (cu. ft.)	78.4
Van cargo volume behind 1st row (cu. ft.)	129.6

Capability (lbs.)³

Cargo Van GVWR	5,005
Wagon GVWR	4,965
Maximum payload	1,600

Passenger Area

1st row	
Head room	51.1"
Shoulder room	54.4"
Hip room	50.8"
Leg room	40.5"

2nd row (Wagon)

Head room	50.5"
Shoulder room	59.6"
Hip room	59.8"
Leg room	38.5"

Passenger Volume (cu. ft.)

Cargo Van	65.1
Wagon	132.1

New Vehicle Limited Warranty. We want your Ford Transit Connect ownership experience to be the best it can be. So under this warranty, your new vehicle comes with 3-year/36,000-mile bumper-to-bumper coverage, 5-year/60,000-mile Powertrain Warranty coverage, 5-year/50,000-mile safety restraint coverage, and 5-year/unlimited-mile corrosion (perforation) coverage – all with no deductible. Please ask your Ford Dealer for a copy of this limited warranty.

Roadside Assistance. Covers your vehicle for 5 years or 60,000 miles, so you have the security of knowing that help may be only a phone call away should you run out of fuel, lock yourself out of the vehicle, or need towing. Your Ford Dealer can provide complete details on all of these advantages.

Ford Credit. Get the ride you want. Whether you plan to lease or finance, you'll find the choices that are right for you at Ford Credit. Ask your Ford Dealer for details or check us out at fordcredit.com.

Ford Extended Service Plan. For a purchase or lease, the Ford Extended Service Plan (ESP) gives you "Peace-of-Mind" protection designed to cover key vehicle components and protect you from the cost of unexpected repairs. Ask your dealer for a Ford ESP, the only service contract backed exclusively by Ford and honored at all Ford dealerships.

Insurance Services. Get Ford Motor Company quality in your auto insurance. Our program offers industry-leading benefits and competitive rates. Call 1-877-367-3847, or visit us at fordvip.com for a no-obligation quote. Insurance offered by American Road Services Company (in CA, American Road Insurance Agency), a licensed agency and subsidiary of Ford Motor Company.

Business Preferred Network. Each of the select dealerships in our Business Preferred Network (BPN) is committed to providing quality commercial-oriented products, as well as special financing and billing arrangements, to businesses that rely on Ford products. As a BPN customer, your business vehicles receive priority service at your BPN dealership, to help get your vehicle back on the road quickly.

Comparisons based on 2010 competitive models (class is Small Cargo Vans), publicly available information and Ford certification data at time of release. Some features discussed may be optional. Vehicles throughout this PDF are shown with optional and aftermarket equipment. Features shown may be offered only in combination with other options or subject to additional ordering requirements or limitations. Dimensions and capacity ratings shown may vary due to optional features and/or production variability. Following release of the PDF, certain changes in standard equipment, options and the like, or product delays may have occurred which would not be included in these pages. Your Ford Dealer is the best source for up-to-date information. Ford Division reserves the right to change product specifications at any time without incurring obligations. Body manufacturers are responsible for compliance certification of the completed vehicle. The Ford New Vehicle Limited Warranty and any government certification made by Ford shall cover only the vehicle as manufactured by Ford and shall not extend to any addition, modification or change of or to the vehicle by the Ford Authorized Pool Account.

Sprint is a registered trademark of Sprint Communications Company L.P.

Garmin is a registered trademark of Garmin Ltd.

Nokia is a registered trademark of Nokia Corporation.

The Bluetooth word mark is a trademark of the Bluetooth SIG, Inc.

Windows is a registered trademark of Microsoft Corporation.

QuietFlex is a registered trademark of Leggett & Platt Commercial Vehicle Products Company.



STANDARD FEATURES



XL Van

Includes all standard features, plus:

SEATING

Driver's seat with manual 6-way adjustment (fore/aft/up/down/recline, plus lumbar) with armrest and map pocket behind seat

Front-passenger seat with manual 4-way adjustment (fore/aft/recline)

INTERIOR

AM/FM stereo with clock and 2 speakers

Manual windows and door locks

Vinyl floor covering in rear cargo area

EXTERIOR

3-bar grille in Gray with locking hood latch

Black door handles

Black, manually adjustable, flat-folding sideview mirrors with integrated blind spot mirrors

Front and rear molded-in-Gray bumpers



XLT Van

Includes select XL Van features, plus:

INTERIOR

AM/FM stereo with single-CD player and 2 speakers

Auxiliary audio input jack in center console

Cruise control

Dual front map lights

Electronic Passive Anti-Theft System (EPATS)

Power Group includes power windows, locks, sideview mirrors with integrated blind spot mirrors, and Remote Keyless Entry System with 2 key fobs

Powerpoint (12V in cargo area)

EXTERIOR

Black, power-adjustable, heated, flat-folding sideview mirrors with integrated blind spot mirrors

Body-color front and rear bumpers

Defroster Package includes rear-window defroster (when equipped with rear glass) and heated sideview mirrors

XLT badge



XLT Wagon

Includes select XLT Van features, plus:

MECHANICAL

AdvanceTrac® with RSC® (Roll Stability Control™)

SEATING

2nd-row manual 60/40 split-fold 3-passenger cloth seat

INTERIOR

AM/FM stereo with single-CD player and 4 speakers

Carpeted floor covering in 2nd row; vinyl in rear cargo area

Powerpoint (12V behind 2nd-row seat)

EXTERIOR

Body-color door handles

Body-color sideview mirrors with integrated blind spot mirrors

Chrome grille

Chrome hood appliqué

Dual sliding side doors with fixed-glass windows and privacy glass

Front fog lamps

Rear-door windows with privacy glass



XLT Premium Wagon

Includes select XLT Wagon features, plus:

INTERIOR

Rear wheelhouse covers and beltline trim

Storage pocket in passenger-side rear cargo door

EXTERIOR

Rear quarter flip-open windows with privacy glass



XLT Taxi Package¹

Includes select XLT Wagon features, plus:

INTERIOR

Repositioned 2nd-row seat for more leg room

Vinyl seats

EXTERIOR

3-bar grille in Gray with locking hood latch

3rd-row flip-open windows with privacy glass

Black, power-adjustable and heated flat-folding sideview mirrors with integrated blind spot mirrors

PACKAGE

Taxi Package includes repositioned 2nd-row seat, heavy-duty battery, wiring block connector, rear air/heat blower with passenger controls, grab handle on B-pillar, vinyl seats, body-color-painted bumpers (except with School Bus Yellow paint), black wheel-lip moldings, roof access hole, and vinyl floor covering; deletes fog lamps, Electronic Passive Anti-Theft System (EPATS) (n/a with 255°-opening rear doors, modified vehicle wiring or Nokia® Bluetooth® system)

¹Taxi Package shown with aftermarket upfit and graphics.

Van: XL & XLT



XLT Van with available equipment



XLT Van in Panther Black with available and aftermarket equipment

2011 TRANSIT CONNECT

commtruck.ford.com



Van: XL & XLT

OPTIONAL FEATURES

XL VAN

AVAILABLE OPTIONS

- 255°-opening rear doors (Fleet only, requires Fleet XL Power Group)
- AdvanceTrac® with RSC® (Roll Stability Control™)
- All-weather front floor mats
- Daytime running lamps
- Engine block heater
- Premium carpeted front floor mats
- Rear-door windows with privacy glass
- Rear view camera (n/a with Power Group or AdvanceTrac with RSC)
- Reverse Sensing System (Fleet only, requires Power Group)
- Side-door window with privacy glass and rear-door windows with privacy glass
- Single side-door window with privacy glass
- Spare keys (2)
- Splash guards

FORD WORK SOLUTIONS™

- Crew Chief™ (n/a with in-dash computer)
- In-dash Windows® CE computer with touch screen (n/a with Crew Chief or Nokia® Bluetooth® system)
- Tool Link™1 (requires in-dash computer; n/a with Cargo Van with side- and rear-door glass or Nokia® Bluetooth® system)

AVAILABLE PACKAGES

CNG/LPG Engine Prep Package includes hardened engine intake and exhaust valves and hardened intake and exhaust valve seats

Power Group includes power windows, door locks, sideview mirrors with integrated blind spot mirrors, cruise control and 2 key fobs (Fleet only)

¹Tool Link cannot read tagged items stored in metal tool boxes.

XLT VAN

AVAILABLE OPTIONS

- 255°-opening rear doors
- AdvanceTrac with RSC (Roll Stability Control)
- All-weather front floor mats
- Daytime running lamps
- Engine block heater
- Key fobs (2)
- Nokia Bluetooth system (n/a with in-dash computer or Tool Link)
- Premium carpeted front floor mats
- Rear-door windows with privacy glass
- Rear view camera
- Remote Start System
- Reverse Sensing System
- Side-door window with privacy glass and rear-door windows with privacy glass
- Single side-door window with privacy glass
- Splash guards

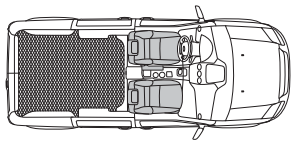
FORD WORK SOLUTIONS

- Crew Chief (n/a with in-dash computer)
- In-dash Windows CE computer with touch screen (n/a with Crew Chief or Nokia Bluetooth system)
- Tool Link¹ (requires in-dash computer; n/a with Cargo Van with side- and rear-door glass or Nokia Bluetooth system)

AVAILABLE PACKAGES

CNG/LPG Engine Prep Package includes hardened engine intake and exhaust valves and hardened intake and exhaust valve seats

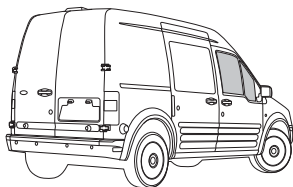
Modified Vehicle Wiring includes 2 engine compartment blunt-cut wires, B+ wire, ignition/run wire, interior lamps wire, and 2 instrument panel blunt-cut wires (requires AdvanceTrac with RSC)



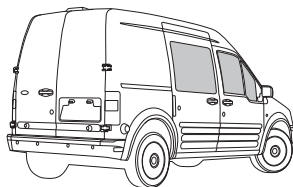
2-passenger seating



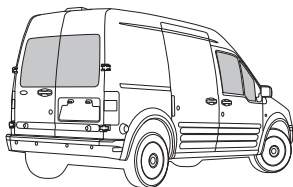
15-in. Steel Wheels
with 6-Spoke Wheel Covers
Standard



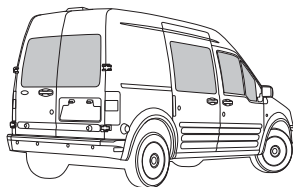
Standard – no rear-door or side-door windows



Optional – single side-door window

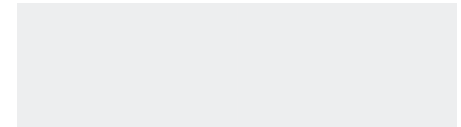


Optional – rear-door windows



Optional – rear-door and side-door windows

EXTERIOR



Frozen White



Torch Red



Silver Metallic

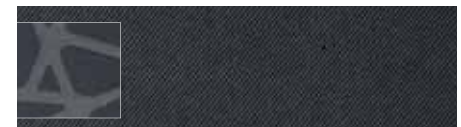


Dark Blue



Panther Black Metallic

INTERIOR



Gray Cloth
Standard

EXTERIOR COLORS

EXTERIOR COLORS	INTERIOR COLOR
Frozen White	●
Torch Red	●
Silver Metallic	●
Dark Blue	●
Panther Black Metallic	●

INTERIOR: ● Gray Cloth

Colors are representative only.
See your dealer for actual paint/trim options.

2011 TRANSIT CONNECT

commtruck.ford.com



Wagon: XL & XLT Premium



XLT Wagon with available equipment



XLT Wagon in Dark Blue with available equipment

2011 TRANSIT CONNECT

commtruck.ford.com



Wagon: XL & XLT Premium

OPTIONAL FEATURES

XLT WAGON

AVAILABLE OPTIONS

- 255°-opening rear doors
- All-weather front and rear floor mats
- Daytime running lamps
- Engine block heater
- Key fobs (2)
- Nokia® Bluetooth® system (n/a with in-dash computer)
- Premium carpeted front and rear floor mats
- Rear view camera
- Remote Start System
- Reverse Sensing System
- Splash guards

FORD WORK SOLUTIONS™

- Crew Chief™ (n/a with in-dash computer)
- In-dash Windows® CE computer with touch screen (n/a with Crew Chief or Nokia Bluetooth system)

AVAILABLE PACKAGES

CNG/LPG Engine Prep Package includes hardened engine intake and exhaust valves and hardened intake and exhaust valve seats

Modified Vehicle Wiring includes 2 engine compartment blunt-cut wires, B+ wire, ignition/run wire, interior lamps wire, and 2 instrument panel blunt-cut wires

XLT PREMIUM WAGON

AVAILABLE OPTIONS

- All-weather front and rear floor mats
- Daytime running lamps
- Engine block heater
- Key fobs (2)
- Nokia Bluetooth system (n/a with in-dash computer)
- Premium carpeted front and rear floor mats
- Rear view camera
- Remote Start System
- Reverse Sensing System
- Splash guards

FORD WORK SOLUTIONS

- Crew Chief (n/a with in-dash computer or Taxi Package)
- In-dash Windows CE computer with touch screen (n/a with Crew Chief, Taxi Package or Nokia Bluetooth system)

AVAILABLE PACKAGES

CNG/LPG Engine Prep Package includes hardened engine intake and exhaust valves and hardened intake and exhaust valve seats

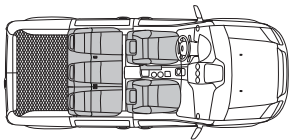
Mobility Motoring Package includes heavy-duty battery and upfitter wiring harness

Modified Vehicle Wiring includes 2 engine compartment blunt-cut wires, B+ wire, ignition/run wire, interior lamps wire, and 2 instrument panel blunt-cut wires

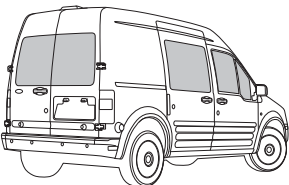
Taxi Package includes repositioned 2nd-row seat, heavy-duty battery, wiring block connector, rear air/heat blower with passenger controls, grab handle on B-pillar, vinyl seats, body-color-painted bumpers (except with School Bus Yellow paint), black wheel-lip moldings, roof access hole, and vinyl floor covering; deletes fog lamps, Electronic Passive Anti-Theft System (EPATS) (n/a with 255°-opening rear doors, modified vehicle wiring or Nokia Bluetooth system)



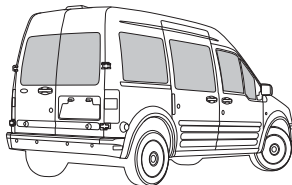
15-in. Steel Wheels
with 6-Spoke Wheel Covers
Standard



5-passenger seating

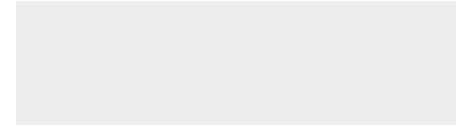


Standard – rear-door and side-door windows (XLT Wagon)



Standard – rear-door, side-door and rear quarter windows (XLT Premium Wagon)

EXTERIOR



Frozen White



School Bus Yellow



Torch Red



Silver Metallic

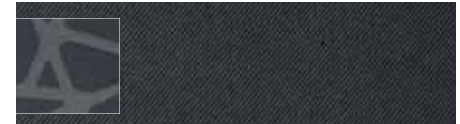


Dark Blue



Panther Black Metallic

INTERIOR



Gray Cloth
Standard on XL/XLT Premium



Gray Vinyl
Requires Taxi Package

EXTERIOR COLORS

EXTERIOR COLORS	INTERIOR COLORS	
Frozen White	●	■
School Bus Yellow ¹	●	■
Torch Red	●	■
Silver Metallic	●	■
Dark Blue	●	■
Panther Black Metallic	●	■

INTERIORS: ● Gray Cloth ■ Gray Vinyl¹

Colors are representative only. See your dealer for actual paint/trim options.

¹Requires Taxi Package.

2011 TRANSIT CONNECT

commtruck.ford.com



upfits your way

If there's one thing that sets Transit Connect apart, it's **versatility**. This becomes even more apparent when it's upfitted with durable bulkhead partitions and **flexible interior storage systems**. Contact your local Ford Dealer to learn more about these aftermarket upfits and others to help fulfill your specific needs. When your Transit Connect Van is **tailored to you**, you're more productive, and that's always good business.

Leggett & Platt offers: wire, steel and solid bulkheads; Racks & Bins, QuietFlex® and Cargo Management interior packages; drawer storage cabinets; rooftop ladder racks; utility carriers; and window security screens.

Dejana offers: Katerack® system of heavy-duty pull-out shelves; standard 6-in. and 10-in. shelves; and trade-ready packages for contractors, caterers and florists.

Adrian Steel offers: wire, steel and hybrid bulkheads; Base, Intermediate, Full and Premium interior packages; flexible shelving; cargo dividers; drawer units; and literature holders.

Sortimo offers: wire mesh and solid bulkheads (with and without a window); Cargo Management; Multi-Purpose Double Floor; Courier Services and Multi-Rack Packages; Tufflex Wall Cladding; L-BOXX set; Sliding Platform; Safety Net and a Mobile Tower.

Ship-through upfits shown are installed by Dejana Equipment Company or Commercial Van Interiors.



2011 TRANSIT CONNECT

commtruck.ford.com



Ford Custom Accessories



Splash Guards



(Standard Size Shown)

Soft Cargo Organizer (Large and Standard Sizes)



Portable Navigation Systems by Garmin®¹



Keyless Entry Keypad



All-Weather Floor Mats



Racks and Carriers by THULE®¹

Also Available:

Electronics

- GPS Tracking and Recovery by SmartAlert™¹
- Forward or Reverse Bumper-Mounted Parking Assist System by EchoMaster®¹
- Remote Start Systems
- Wiper De-Icer and Debris Cleaner by Wiper Shaker¹

Exterior

- Side Window Deflectors
- Hood Deflector
- Sportz® Truck Tents by Napier¹
- Rear Window Grilles
- Roof Cross Bars
- Roof Cargo Basket (Shown on Cover)

Interior

- Soft Cargo Cooler Bag
- Premium Carpeted Floor Mats
- Cargo Net by Las-Stik¹


¹Ford Licensed Accessories.
²Visit fordcommercialgraphics.com to develop your selection. See dealer for additional details.
 THULE is a registered trademark of Thule Sweden AB.
 SmartAlert is a registered trademark of Inilex, Inc.



Ford Custom Graphics by Original Wraps™, Inc.^{1,2}



To learn more about Ford Custom Accessories and to shop online, visit fordaccessories.com.

 Genuine Ford Accessories will be warranted for whichever provides you the greatest benefit: 12 months or 12,000 miles (whichever occurs first), or the remainder of your Bumper-to-Bumper 3-year/36,000-mile New Vehicle Limited Warranty. Contact your local Ford Dealer for details and a copy of the limited warranty. Ford Licensed Accessories (FLA) are warranted by the accessory manufacturer's warranty. Ford Licensed Accessories are fully designed and developed by the accessory manufacturer and have not been designed or tested to Ford Motor Company engineering requirements. Contact your Ford Dealer for details regarding the manufacturer's limited warranty and/or a copy of the FLA product limited warranty offered by the accessory manufacturer.

2011 TRANSIT CONNECT

commtruck.ford.com

