



2008 SPORT TRAC



Contents

▶ Power & 4x4	2
▶ Cargo Box	3
▶ Driver Controls	4
▶ New Ford SYNC™	5
▶ Interior Comfort	6
▶ Safety & Security	7-8
▶ Specifications	9-11

[CAPABILITY ▶](#)[VERSATILITY ▶](#)[COMFORT ▶](#)[SAFETY ▶](#)[SPECS ▶](#)

Ready. Set. GO.

Can't wait to hit the trails, dominate the slopes or just hang out in Red Rock country? The 2008 Ford Sport Trac is ready for your kind of action. Its versatile cargo box is made of a composite material that resists dents and scratches. The optional V8 engine churns out a gutsy 292 hp. The power-sliding rear window and all 6 airbags are now standard. Our optional Control Trac® 4-wheel drive gives you serious off-road ability. And our exclusive new Ford SYNC in-vehicle communications system connects you with your Sport Trac like never before. It's time to go.



Sport Trac Limited in Vapor Silver Metallic with available equipment



Big fun factor. ▲

When properly equipped, Sport Trac 4x2 with the optional V8 engine can tow up to 7160 lbs.

Smooth rider. ▼

Sport Trac's independent rear suspension tackles rough terrain and uneven road surfaces with ease.


[CAPABILITY ▶](#)
[VERSATILITY ▶](#)
[COMFORT ▶](#)
[SAFETY ▶](#)
[SPECS ▶](#)

Empower yourself to RISE ABOVE.

Whether you're headed for the open road or out into the backcountry, Sport Trac's optional 4.6L 3-valve V8 engine and 6-speed automatic transmission are designed to tackle it all with confidence. This sophisticated duo cranks out a vigorous 292 hp at 5750 rpm and 300 lb.-ft. of torque at 3950 rpm. The electronically controlled 6-speed delivers peak power when you need it, such as during acceleration or when climbing a hill, and peak efficiency whenever possible. Of course, the standard 4.0L SOHC V6 engine and 5-speed automatic transmission are also built to hold their own, pumping out a substantial 210 hp and 254 lb.-ft. of torque. The optional Control Trac® 4-wheel-drive system serves up extra traction on demand, taking you from everyday driving in the convenient 4x4 AUTO mode to serious rock-crawling in the 4x4 LOW mode at the touch of a button. It's all about versatility.



Sport Trac Limited in Redfire Metallic with available equipment



Below deck. ▲

Removable drain plugs and weather-resistant lids make Sport Trac's 3 cargo box gear bins perfect for stuff you want to keep *wet or dry*.

[CAPABILITY ▶](#)
[VERSATILITY ▶](#)
[COMFORT ▶](#)
[SAFETY ▶](#)
[SPECS ▶](#)

Be prepared to GO ALL IN.

Think you may need it? Toss it in. Sport Trac's versatile cargo box holds up to 37.5 cu. ft. of gear. And another 6+ cu. ft. with the optional cargo cage bed extender in place and the tailgate open. The extender also works as a partition with the tailgate closed. The cargo box's corrosion-proof, sheet-molded, composite exterior takes muddy trails in stride, while the dent-proof, scratch-resistant, molded inner liner withstands the worst. Special notches inside the box can be used to help create tiered storage perfect for carrying 4' x 8' sheets of plywood with the tailgate open. As always, Sport Trac's standard cargo box power point is ready to supply the juice for your portable air compressor, cooler or anything else with a compatible adapter cord. And now that the power-sliding rear window is standard on all models, it'll be even easier to access all your stuff.

Under cover. ▶

Hinged in the middle for ease of use, the optional, locking, hard tonneau cover can also be removed to open up access to the entire box.



Cargo and load capacity limited by weight and weight distribution.



Sport Trac Limited leather-trimmed interior in Camel with available equipment

SIRIUS
SATELLITE RADIO
THE BEST RADIO ON RADIO

[CAPABILITY ▶](#)
[VERSATILITY ▶](#)
[COMFORT ▶](#)
[SAFETY ▶](#)
[SPECS ▶](#)

Consider it your adventure COMMAND CENTER.

The intuitive layout of Sport Trac's instrument panel makes it easy for you to jump in and take charge. New for 2008, a luxurious leather-wrapped steering wheel is now standard. And for your listening pleasure, every Sport Trac gets an auxiliary audio input jack you can use to listen to music from your MP3 player over the vehicle's sound system. The optional Audiophile[®] Sound System gives you a 6-disc in-dash CD changer with MP3 capability and an 8" subwoofer with its own dedicated amplifier. Plus, you can add SIRIUS Satellite Radio,¹ with its 130+ channels of coast-to-coast sports, news, entertainment and 100% commercial-free music, to any Sport Trac sound system. Also new for 2008, voice activation on the optional Navigation System allows you to keep both hands on the wheel.



Power play. ▲

The convenience of a power-sliding rear window is now standard on every Sport Trac.

Half the time. ▶

Sport Trac's optional class-exclusive² heated windshield clears in about half the time it takes a conventional forced-air system.

²Sport Utility Truck class.



¹Service not available in Alaska or Hawaii. See your Ford Dealer or contact SIRIUS at 1-888-539-7474 for more information.



CAPABILITY ▶ | VERSATILITY ▶ | COMFORT ▶ | SAFETY ▶ | SPECS ▶

Exclusive new Ford SYNC™

BLUETOOTH® VOICE-ACTIVATED, HANDS-FREE PHONE CALLING

MULTILINGUAL INTELLIGENCE – Communicate with SYNC in English, French or Spanish

- UNINTERRUPTED CONNECTIONS – In the middle of a call on the way to or from your vehicle? Keep on talking; once paired with your Bluetooth-enabled phone, SYNC automatically transfers calls as you enter and exit
- RING-TONE SUPPORT¹ – Have specific ring tones assigned to your friends and family? SYNC can play them to help you identify incoming calls
- SUPPORT FOR UP TO 12 BLUETOOTH-ENABLED PHONES – The system can be paired with as many as 12 different phones at once, so your entire family can get in SYNC
- INSTANT VOICE RECOGNITION
- AUTOMATIC PHONE BOOK TRANSFER¹

VOICE-ACTIVATED, HANDS-FREE DIGITAL MEDIA PLAYING

- SUPPORT FOR POPULAR PLAYERS AND FORMATS – SYNC works with most popular digital media players, as well as USB drives
- SIMPLE VOICE COMMANDS – Access your music library by speaking commands like “Play All,” “Similar Music” or simply “Play Artist” plus the name of an artist
- USB DEVICE CHARGING – SYNC automatically charges most devices while your vehicle is running
- BLUETOOTH STREAMING AUDIO¹ – SYNC can play music files saved to your Bluetooth-enabled mobile phone as well
- PODCAST AND AUDIO BOOK SUPPORT

Link your words. ▲

Introducing the new standard for in-vehicle communications. Ford SYNC, developed in association with Microsoft®, is an available, voice-activated, customizable media system that fully integrates your Ford Sport Trac with most Bluetooth-enabled mobile phones and most portable digital media players. Go to SyncMyRide.com for more details.



¹Requires a Bluetooth-enabled phone with this capability. Driving while distracted can result in a loss of vehicle control. Only use mobile phones (even with voice commands) and other devices not essential to driving when it is safe to do so. Microsoft is a registered trademark of Microsoft Corporation. The Bluetooth word mark is a registered trademark owned by the Bluetooth SIG, Inc.



Sport Trac Limited leather-trimmed interior in Camel with available equipment

[CAPABILITY ▶](#)

[VERSATILITY ▶](#)

[COMFORT ▶](#)

[SAFETY ▶](#)

[SPECS ▶](#)

Recharge in rugged REFINEMENT.

From the foundation up, Sport Trac is designed to help you relax between adventures. Its exceptionally stiff frame contributes to the extremely quiet ride. And the latest lightweight materials help insulate key areas like the doors, instrument panel and headliner. Even the standard molded-rubber flooring and heavy-duty berber floor mats help keep road noise where it belongs: outside. Up front, standard overhead and center floor consoles give you plenty of places to stow your favorite CDs and other small stuff close at hand.

44.4 CU. FT. OF
INTERIOR CARGO
SPACE WITH REAR
SEAT FOLDED FLAT.

In back, the standard 60/40 split seat easily accommodates up to 3 adults and includes articulating head restraints for outboard passengers, which can be flipped forward when not in use to open up your view through the rear window. Sport Trac's interior really is all about comfort. You'll find it's the perfect place to relax – anytime.



More than movies. ▶

Sport Trac's optional Rear-Seat DVD Entertainment System is just the thing to keep those in the back happy on long and short trips alike. The system includes an 8" color LCD flip-down screen, 2 sets of wireless headphones and an infrared remote control. Use it to play DVDs, CDs and even video games when you bring your compatible gaming system along for the ride.



Sport Trac Limited in Black with available equipment

CAPABILITY ▶

VERSATILITY ▶

COMFORT ▶

SAFETY ▶

SPECS ▶

Trust its innate STABILITY.

Whether adventure leads you up snow-covered country lanes or around bustling city streets, you can count on Sport Trac's cutting-edge safety and security features to be there, behind the scenes, helping protect you and your loved ones. A perfect example: AdvanceTrac® with class-exclusive RSC® (Roll Stability Control™), our standard electronic stability enhancement system. It uses a unique vehicle-roll motion sensor to directly measure the vehicle's roll rate, which other manufacturers' systems ignore or can only estimate. Our system checks the rate 100 times every second to help decide when and how it should engage the Anti-lock Brake System (ABS), traction control and yaw control to apply individual brakes and modify engine power, ultimately helping you keep all 4 wheels firmly planted. This remarkable system is not available on any of the competition.

Assistance on demand. ▲

AdvanceTrac with RSC can help in many real-world situations, such as when you're making an emergency maneuver to avoid something in the road; driving on slippery surfaces like snowy, muddy, wet or gravel roads; or just traveling on uneven surfaces, such as in construction zones.

Remember that even advanced technology cannot overcome the laws of physics. It's always possible to lose control of a vehicle due to inappropriate driver input for the conditions. For more information on AdvanceTrac with RSC, visit fordvehicles.com.



Sport Trac XLT in Silver Birch Metallic with available equipment

5-STAR SAFETY RATINGS



Sport Trac received 5-Star ratings¹ in the National Highway Traffic Safety Administration's (NHTSA) Frontal and Side-Impact crash tests.

¹2007 model year.

[CAPABILITY ▶](#)

[VERSATILITY ▶](#)

[COMFORT ▶](#)

[SAFETY ▶](#)

[SPECS ▶](#)

Standard for 2008: ALL 6 AIRBAGS.

That's right. All 6 airbags are now standard on every Ford Sport Trac. You get the adaptive front airbags in our class-exclusive Intelligent Safety System™ (ISS), plus front-seat side airbags, and the side-curtain airbags in our patented Safety Canopy® System. All standard. And always at the ready. A suite of sophisticated sensors is constantly feeding information to the ISS so it can adjust the performance of the adaptive front airbags, adaptive load-limiting safety belt retractors and adaptive stroking steering column to enhance your protection in the event of certain frontal collisions. The large side-curtain airbags enhance protection for outboard-seated occupants in the front and rear. And to top it off, Sport Trac is designed to meet all known U.S. government-regulated frontal and side-impact crash requirements through the 2010 model year.

Built to give. ▼

In the event of a frontal crash, Sport Trac's adaptive stroking steering column works like a shock absorber, in conjunction with your safety belt and the front airbag, to help reduce the impact to your chest.



Specifications

CAPABILITY ▶

VERSATILITY ▶

COMFORT ▶

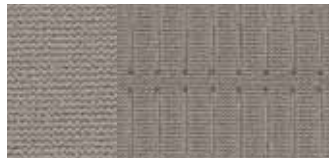
SAFETY ▶

SPECS ▶

INTERIORS



Camel Cloth with Sand Inserts
Standard on XLT and Limited



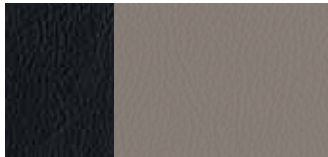
Medium Light Stone Cloth¹
Standard on XLT



Charcoal Black Cloth with
Medium Light Stone Inserts
Standard on Limited



Camel Leather with Sand Inserts
Optional on Limited



Charcoal Black Leather with
Medium Light Stone Inserts
Optional on Limited

CAMEL

CHARCOAL BLACK

XLT

White Suede²
Stone Green Metallic²
Redfire Metallic
Dark Blue Pearl Metallic
Silver Birch Metallic
Vapor Silver Metallic²
Black

LIMITED

White Suede²
Stone Green Metallic²
Redfire Metallic
Dark Blue Pearl Metallic
Silver Birch Metallic
Vapor Silver Metallic²
Black
Dark Cherry Metallic

¹Charcoal Black environment. ²New for 2008.

ENGINES

	4.0L SOHC V6	4.6L 3V V8
Horsepower (hp @ rpm)	210 @ 5100	292 @ 5750
Torque (lb.-ft. @ rpm)	254 @ 3700	300 @ 3950

TRAILER TOWING APPLICATIONS

MAXIMUM LOADED TRAILER WEIGHT (lbs.)

AXLE RATIO	4.0L SOHC V6	AXLE RATIO	4.6L 3V V8
3.73	4x2 Class II	3.55	4x2 Class II
	4x4 Class II		4x2 Class II
	4x2 Class III/IV		4x2 Class III/IV
	4x4 Class III/IV		4x2 Class III/IV
	3500		3500
	3500		7160
	5260		7000
	5090		

Maximum weights shown are for properly equipped vehicles with required equipment and a 150-lb. driver. Weight of additional options, equipment, passengers and cargo must be deducted from this weight. For additional information, see your Ford Dealer.

Cargo and load capacity limited by weight and weight distribution.

WHEELS

- A** 16" Painted-Aluminum
Standard on XLT
- B** 17" Painted-Aluminum
Included in XLT Appearance Package
- C** 18" Machined-Aluminum
Standard on Limited
- D** 18" Chrome-Clad Aluminum
Included in Limited
Chrome Package



Specifications

[CAPABILITY ▶](#)
[VERSATILITY ▶](#)
[COMFORT ▶](#)
[SAFETY ▶](#)
[SPECS ▶](#)

EXTERIORS



White Suede



Stone Green Metallic



Redfire Metallic



Dark Blue Pearl Metallic



Silver Birch Metallic



Vapor Silver Metallic



Black



Dark Cherry Metallic

Ford uses clearcoat paint for beauty and protection. Colors shown are representative only. Not all colors are available on all models. See your dealer for actual paint/trim options. Vehicles shown may contain optional equipment.



New Vehicle Limited Warranty

We want your Ford Sport Trac ownership experience to be the best it can be. So under this warranty, your new vehicle comes with 3-year/36,000-mile Bumper-to-Bumper Coverage, 5-year/60,000-mile Powertrain Warranty Coverage, 5-year/50,000-mile Safety Restraint Coverage, and 5-year/unlimited-mile Corrosion (Perforation) Coverage — all with no deductible. Please ask your Ford Dealer for a copy of this limited warranty.

For more assurance: The 5-year/60,000-mile powertrain limited warranty is fully transferable, has no deductible, and provides you with an additional 2 years or 24,000 miles of coverage — on select components, including the engine and transmission — beyond the standard 3-year/36,000-mile Bumper-to-Bumper Coverage. Roadside Assistance is extended to 5 years or 60,000 miles, so you have the security of knowing that help may be only a phone call away should you run out of fuel, lock yourself out of the vehicle, or need towing. Your Ford Dealer can provide complete details on all of these advantages.



Get the ride you want. Whether you plan to lease or finance, you'll find the choices that are right for you at Ford Credit. Ask your Ford Dealer for details or check us out at fordcredit.com.



Get Ford Motor Company quality in your auto insurance. Our program offers industry-leading benefits and competitive rates. Call 1-877-367-3847, or visit us at fordvip.com for a no-obligation quote. Insurance offered by American Road Services Company (in CA, American Road Insurance Agency), a licensed agency and subsidiary of Ford Motor Company.



For a purchase or lease, the Ford **Extended Service Plan (ESP)** gives you "Peace-of-Mind" protection designed to cover key vehicle components and protect you from the cost of unexpected repairs. Ask your dealer for an ESP, the only service contract backed exclusively by Ford and honored at all Ford Lincoln Mercury dealerships.



Genuine Ford Accessories are designed and engineered specifically for Ford vehicles. Visit our website at fordaccessoriesstore.com to use the Accessorizer, and to learn about complete accessory details and purchase instructions.